

XPass S2

Intelligent IP Multi-smartcard Access Control Device



Xpass S2 is a multi-smartcard device containing advanced features of a high-end IP access control device making it versatile and powerful. It features an IP65 ingress protection rating and a wide operational temperature range (-35°C - 65°C) perfect for outdoor environments. Xpass S2 has an aesthetically pleasing ultra slim design and has been designed to mount easily on US, EU and Asian gang boxes. Device supports additional RS485 and Wiegand interfaces for flexible integration with 3rd party systems.

Features

Hardware Features

- **True environment adaptability**
 - IP65 ingress protection certified
 - Dust and waterproof features for adapt to outdoor installations
 - Integrated temperature adaptive heater to combat cold environments
 - Operational temperature range from -35°C to 65°C
- **Versatile interface support**
 - TCP/IP, RS485, Wiegand interface
- **Large device memory for enterprise level access control applications**
 - Supports up to 50,000 users and 100,000 logs
 - Supports up to 128 user groups and 64 zones
- **Extensive Multi-smartcard support**
 - MiFare, DESFire, ISO14443A/B, ISO15693, FeliCa, NFC
- **Minimalistic Ultra slim design**
 - Designed to fit standard US/EU/ASIA gang box
 - Profile that is only 11.4mm thick to create a slim aesthetic look
- **Easier Installation and operation**
 - Simple wiring due to usage of TCP/IP based distributed system
 - Embedded controller capabilities for locks and sub-devices using relays and Wiegand
 - Command card support for on-device user enrollment

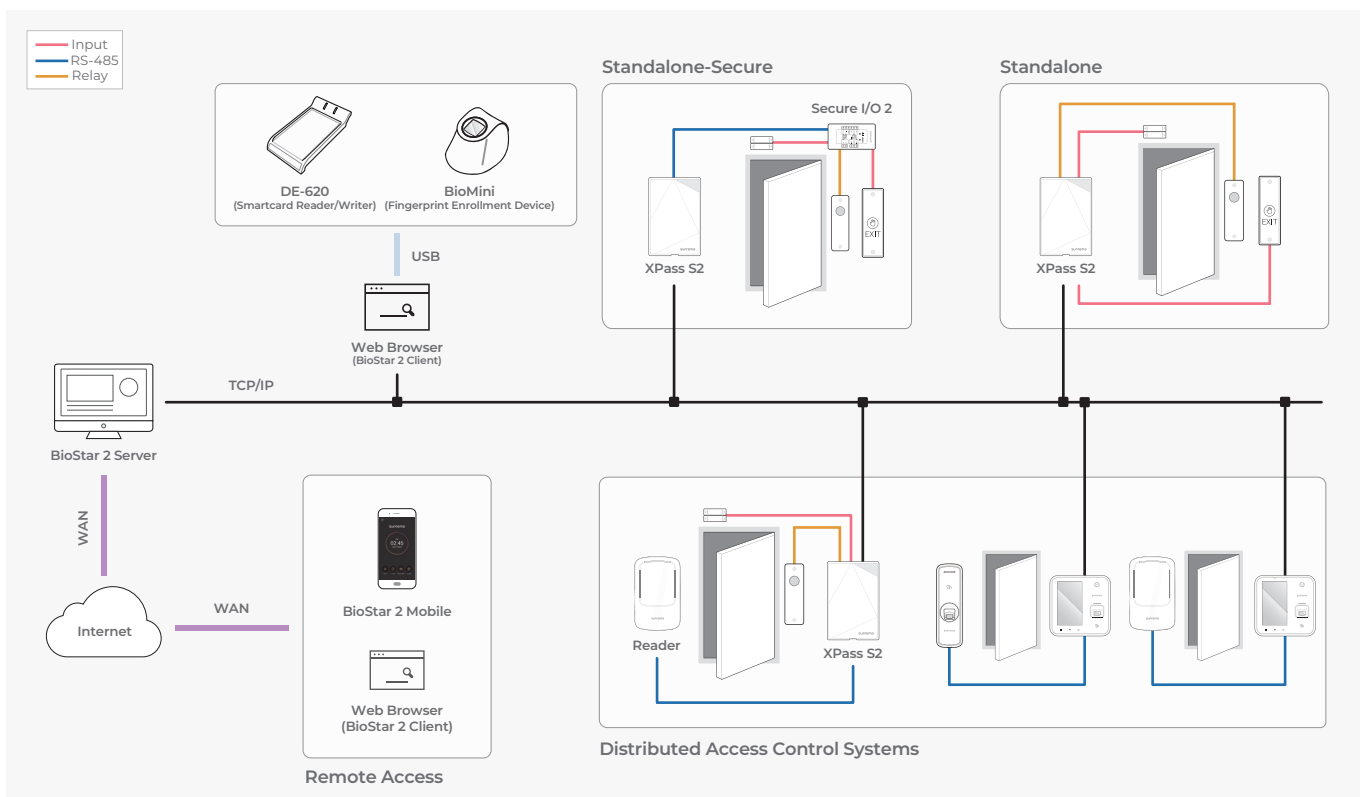
Secure I/O

- External Relay unit for secure door control and I/O expansion
- Encrypted communication for enhanced security
 - 16MHz 8-bit microprocessor
 - 4 digital inputs and 2 relay outputs
 - Dimensions : 143 x 82 x 35 mm (W x H x D)

Specifications

RF Card	13.56MHz ISO14443A/B, ISO15693, Mifare, Desfire(CSN), Felica
User Capacity	50,000
Log Capacity	100,000
Network Interfaces	TCP/IP, RS485
Wiegand	In or Out (Switchable)
TTL I/O	2 x Input
Relay	1 x Output
CPU	32-bit Microprocessor (533Mhz)
Memory	16MB Flash + 16MB SDRAM
Indicator	Multi-color LED
Sound	Multi-tone Buzzer
Ingress Protection	IP65
Operating Temperature	-35°C - 65°C
Tamper	Optical Tamper
Operating Voltage	12V DC (Max. 300mA)
Dimensions (mm)	80(W) x 120(H) x 11.4(D)
Certificates	CE, FCC, MSIP (KCC), IP65, RoHS, REACH, WEEE

System Configurations



Suprema Inc.

17F Parkview Tower, 248, Jeongjail-ro, Bundang-gu, Seongnam-si, Gyeonggi-do, 13554, Republic of Korea
 T +82 31 783 4502 E sales_sys@supremainc.com www.supremainc.com



For more information about Suprema's global branch offices, visit the webpage below by scanning the QR code.
<https://www.supremainc.com/en/about/contact-us.asp>